

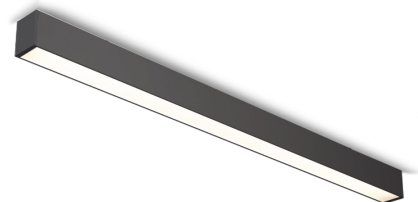
Family datasheet

Basic Surface



Product description

Basic linear led luminaire for offices, meeting rooms, corridors and households.




LED 220-240 V 50-60 Hz IP20  

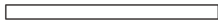
Technical description

Mains voltage	220 - 240V AC, 50/60Hz
Connection method	Plug-in terminal
IP rating	20
Protection class	I
Light source	LED
Switching type	Non-dimmable , DALI
CRI	80
CCT	4000K
Lumen output	3181-3895 lm
Efficiency	Up to 123 lm/W
Power consumption	26-31 W

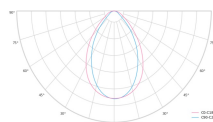
Optical system	Diffuser
Optical part material	PC
Housing material	Aluminium
Surface finish	Powder coated
Ambient temperature	0 to +25°C
Service lifetime (L80 B30)	50 000h
Warranty	3 years

Dimensions

1200		l 1200 mm w 50 mm h 73 mm
------	---	---------------------------------

1500		l 1500 mm w 50 mm h 73 mm
------	---	---------------------------------

Light distribution curves



Prismatic diffuser

Available housing colors



RAL 9005 RAL 9003

Product codes

The technical specifications of the luminaire are determined through the combination of these attributes, which result in a unique product code.

Order code example: **BASICSUR-1200-840-1-PD-BL**

Attribute	Value	Code
Model	Basic Surface	BASICSUR-
Size	1200	1200
	1500	1500
CCT	4000k (CRI 80+)	840
Dimming	Non-dimmable	1
	DALI	2
Light distribution	Prismatic diffuser	PD
Housing Color	Black	BL
	White	WH