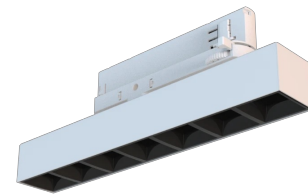


# Family datasheet

## Worker Compact

### Product description

Worker Compact is a modern track LED luminaire for 3-phase system with LED source with 50,000 hours lifetime. Available in 3 power options, wide range of color temperatures (2700K-4000K) with CRI 80+/90+. Five light distribution types (50°, 80°, ASYM, SYM, WAS) and DALI control option available. Uses the most modern LED technology for powerful and economical lighting. Ideal for offices, corridors and retail spaces. 5-year warranty.

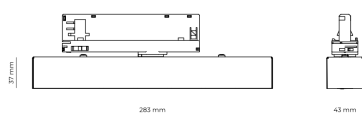
**LED** 220-240 V 50-60 Hz IP20   UGR < 19

### Technical description

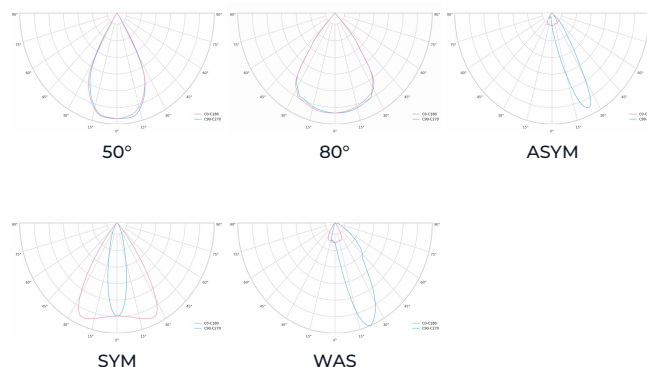
Mains voltage	220 - 240V AC, 50/60Hz
Connection method	3-phase track adapter
IP rating	20
Protection class	II
Light source	LED
Switching type	Non-dimmable , DALI
CRI	80, 90
CCT	2700K, 3000K, 3500K, 4000K
Lumen output	669-1535 lm
Efficiency	Up to 120 lm/W
Power consumption	8-13 W

Optical system	Lenses
Optical part material	PMMA
Surface finish	Powder coated
Ambient temperature	0 to +25°C
Service lifetime (L80 B10)	50 000h
Warranty	5 years

### Dimensions



### Light distribution curves



## Available housing colors



RAL 9005



RAL 9003

## Product codes

The technical specifications of the luminaire are determined through the combination of these attributes, which result in a unique product code.

Order code example: **WORCOM-L-830-1-50-BL**

Attribute	Value	Code
Model	Worker Compact	WORCOM-
Version	S	S
	M	M
	L	L
CCT	2700k (CRI 90+)	927
	3000k (CRI 80+)	830
	3000k (CRI 90+)	930
	3500k (CRI 90+)	935
	4000k (CRI 80+)	840
	4000k (CRI 90+)	940
Dimming	Non-dimmable	1
	DALI	2
Light distribution	50°	50
	80°	80
	ASYM	ASYM
	SYM	SYM
	WAS	WAS
Housing Color	Black	BL
	White	WH