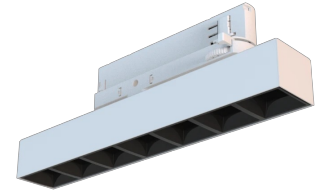


# Technical datasheet

## WORCOM-S-830-1-50-WH

ARLI



### Product description

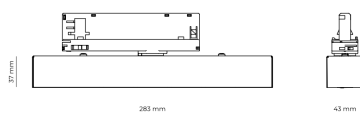
Worker Compact is a modern track LED luminaire for 3-phase system with LED source with 50,000 hours lifetime. Available in 3 power options, wide range of color temperatures (2700K-4000K) with CRI 80+/90+. Five light distribution types (50°, 80°, ASYM, SYM, WAS) and DALI control option available. Uses the most modern LED technology for powerful and economical lighting. Ideal for offices, corridors and retail spaces. 5-year warranty.

**LED** 220-240 V 50-60 Hz **IP20**   **UGR < 19** **CCT 3000 k** **CRI 80+**

### Product technical data

Mains voltage	220 - 240V AC, 50/60Hz	Ripple	5 %
Connection method	3-phase track adapter	Inrush current	17 A
Dimming type	Non-dimmable	Inrush time	172 μs
IP rating	20	Optical system	Lenses
Protection class	II	Optical part material	PMMA
Ambient temperature	0 to +25 °C	Surface finish	Powder coated
Light source	LED	Width	43.00 cm
Colour temperature	3000k	Height	37.00 cm
Color rendering index	80	Length	283.00 cm
Rated luminous flux	1,108 lm	Weight	0.45 kg
Connected load	10.62 W	Service lifetime (L80 B10)	50 000 h
Luminous efficacy	104.3 lm/W	Warranty	5 years

### Dimensions



### Light distribution

