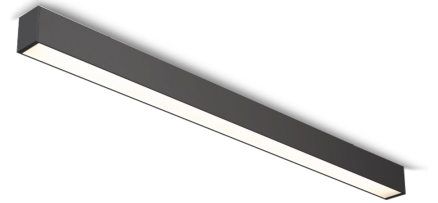


Technical datasheet

BASICSUR-1200-840-2-PD-BL

Product description

Basic linear led luminaire for offices, meeting rooms, corridors and households.

LED 220-240 V 50-60 Hz **IP20**  **CE** **CCT 4000 k** **CRI 80+**

Product technical data

Mains voltage	220 - 240V AC, 50/60Hz	Optical system	Diffuser
Connection method	Plug-in terminal	Optical part material	PC
Dimming type	DALI	Housing material	Aluminium
IP rating	20	Surface finish	Powder coated
Protection class	I	Width	50.00 cm
Ambient temperature	0 to +25 °C	Height	70.00 cm
Light source	LED	Length	1,200.00 cm
Colour temperature	4000k	Weight	1.70 kg
Color rendering index	80	Service lifetime (L80 B30)	50 000 h
Rated luminous flux	3,182 lm	Warranty	3 years
Connected load	26.60 W		
Luminous efficacy	119.6 lm/W		

Dimensions



l 1200 mm
w 50 mm
h 73 mm

Light distribution

