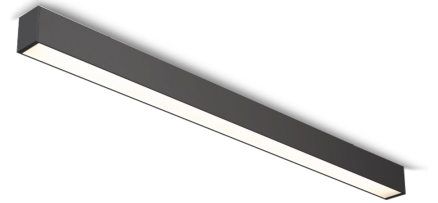


Technical datasheet

BASICSUR-1500-840-1-PD-BL

Product description

Basic linear led luminaire for offices, meeting rooms, corridors and households.

LED 220-240 V 50-60 Hz
 IP20


CCT 4000 k
CRI 80+

Product technical data

Mains voltage	220 - 240V AC, 50/60Hz
Connection method	Plug-in terminal
Dimming type	Non-dimmable
IP rating	20
Protection class	I
Ambient temperature	0 to +25 °C
Light source	LED
Colour temperature	4000k
Color rendering index	80
Rated luminous flux	3,896 lm
Connected load	31.62 W
Luminous efficacy	123.2 lm/W

Optical system	Diffuser
Optical part material	PC
Housing material	Aluminium
Surface finish	Powder coated
Width	50.00 cm
Height	70.00 cm
Length	1,500.00 cm
Weight	2.00 kg
Service lifetime (L80 B30)	50 000 h
Warranty	3 years

Dimensions



l 1500 mm
 w 50 mm
 h 73 mm

Light distribution

