

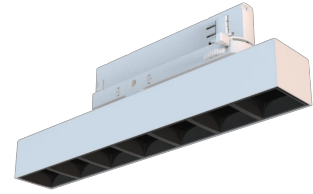
# Technical datasheet

## WORCOM-M-927-1-SYM-WH



### Product description

Worker Compact is a modern track LED luminaire for 3-phase system with LED source with 50,000 hours lifetime. Available in 3 power options, wide range of color temperatures (2700K-4000K) with CRI 80+/90+. Five light distribution types (50°, 80°, ASYM, SYM, WAS) and DALI control option available. Uses the most modern LED technology for powerful and economical lighting. Ideal for offices, corridors and retail spaces. 5-year warranty.



**LED** 220-240 V 50-60 Hz **IP20**   **UGR < 19** **CCT 2700 k** **CRI 90+**

### Product technical data

|                       |                        |                            |               |
|-----------------------|------------------------|----------------------------|---------------|
| Mains voltage         | 220 - 240V AC, 50/60Hz | Ripple                     | 5 %           |
| Connection method     | 3-phase track adapter  | Inrush current             | 17 A          |
| Dimming type          | Non-dimmable           | Inrush time                | 172 µs        |
| IP rating             | 20                     | Optical system             | Lenses        |
| Protection class      | II                     | Optical part material      | PMMA          |
| Ambient temperature   | 0 to +25 °C            | Surface finish             | Powder coated |
| Light source          | LED                    | Width                      | 43.00 cm      |
| Colour temperature    | 2700k                  | Height                     | 37.00 cm      |
| Color rendering index | 90                     | Length                     | 283.00 cm     |
| Rated luminous flux   | 823 lm                 | Weight                     | 0.45 kg       |
| Connected load        | 11.76 W                | Service lifetime (L80 B10) | 50 000 h      |
| Luminous efficacy     | 70.0 lm/W              | Warranty                   | 5 years       |

### Dimensions



### Light distribution

