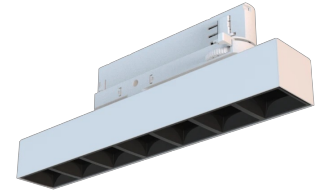


Technical datasheet

WORCOM-M-927-2-50-WH

Product description

Worker Compact is a modern track LED luminaire for 3-phase system with LED source with 50,000 hours lifetime. Available in 3 power options, wide range of color temperatures (2700K-4000K) with CRI 80+/90+. Five light distribution types (50°, 80°, ASYM, SYM, WAS) and DALI control option available. Uses the most modern LED technology for powerful and economical lighting. Ideal for offices, corridors and retail spaces. 5-year warranty.

LED 220-240V 50-60Hz **IP20**   **UGR < 19** **CCT 2700 k** **CRI 90+** 

Product technical data

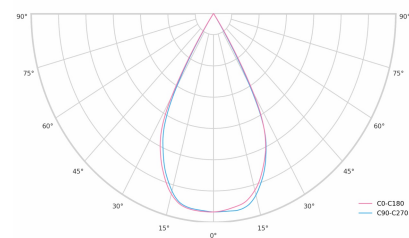
Mains voltage	220 - 240V AC, 50/60Hz
Connection method	3-phase track adapter
Dimming type	DALI
IP rating	20
Protection class	II
Ambient temperature	0 to +25 °C
Light source	LED
Colour temperature	2700k
Color rendering index	90
Rated luminous flux	960 lm
Connected load	11.23 W
Luminous efficacy	85.5 lm/W

Ripple	1 %
DALI address	1
Standby power	0.30 W
Inrush current	10 A
Inrush time	80 µs
Optical system	Lenses
Optical part material	PMMA
Surface finish	Powder coated
Width	43.00 cm
Height	37.00 cm
Length	283.00 cm
Weight	0.45 kg
Service lifetime (L80 B10)	50 000 h
Warranty	5 years

Dimensions



Light distribution



DALI 2

DALI (Digital Addressable Lighting Interface) is an international standard for digital lighting control systems. It enables individual control of each luminaire in the network using digital signals - unlike traditional analog solutions.

Key DALI2 innovations:

- Advanced diagnostic capabilities
- Better fault reporting and device status
- Enhanced scene programming options
- Support for RGB/RGBW and tunable white