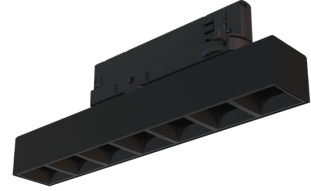


Technical datasheet

WORCOM-S-927-1-WAS-BL

ARLI



Product description

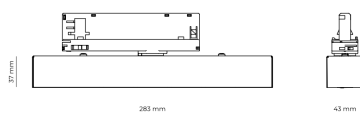
Worker Compact is a modern track LED luminaire for 3-phase system with LED source with 50,000 hours lifetime. Available in 3 power options, wide range of color temperatures (2700K-4000K) with CRI 80+/90+. Five light distribution types (50°, 80°, ASYM, SYM, WAS) and DALI control option available. Uses the most modern LED technology for powerful and economical lighting. Ideal for offices, corridors and retail spaces. 5-year warranty.

LED 220-240 V 50-60 Hz **IP20**   **UGR < 19** **CCT 2700 k** **CRI 90+**

Product technical data

| | | | |
|-----------------------|------------------------|----------------------------|---------------|
| Mains voltage | 220 - 240V AC, 50/60Hz | Ripple | 5 % |
| Connection method | 3-phase track adapter | Inrush current | 17 A |
| Dimming type | Non-dimmable | Inrush time | 172 µs |
| IP rating | 20 | Optical system | Lenses |
| Protection class | II | Optical part material | PMMA |
| Ambient temperature | 0 to +25 °C | Surface finish | Powder coated |
| Light source | LED | Width | 43.00 cm |
| Colour temperature | 2700k | Height | 37.00 cm |
| Color rendering index | 90 | Length | 283.00 cm |
| Rated luminous flux | 725 lm | Weight | 0.45 kg |
| Connected load | 9.42 W | Service lifetime (L80 B10) | 50 000 h |
| Luminous efficacy | 77.0 lm/W | Warranty | 5 years |

Dimensions



Light distribution

